



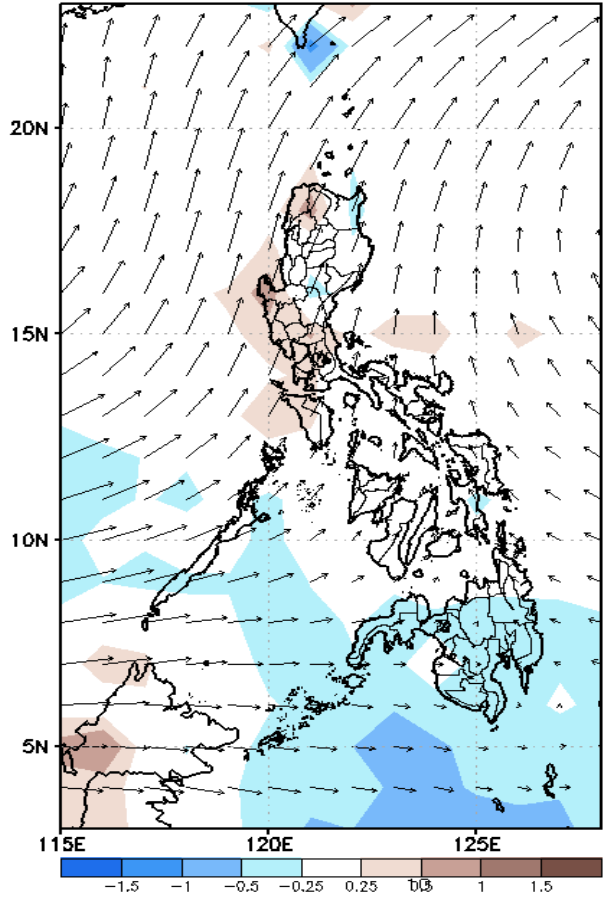
# Week 1 & Week 2 Forecast for the Philippines using GEFS Model



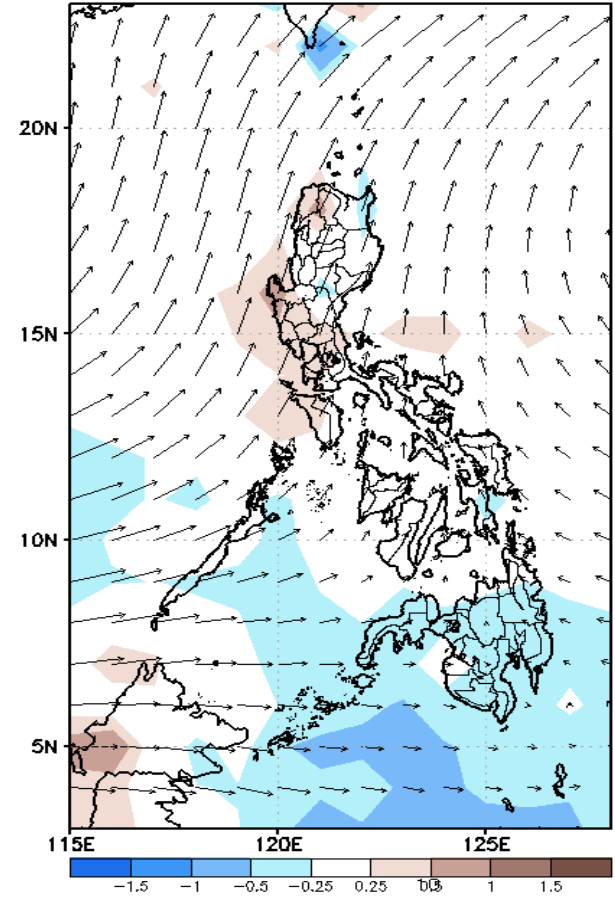
# GEFS Week-1 Forecasts: Wind Anomaly Forecast

Week 1: May 23-29, 2022

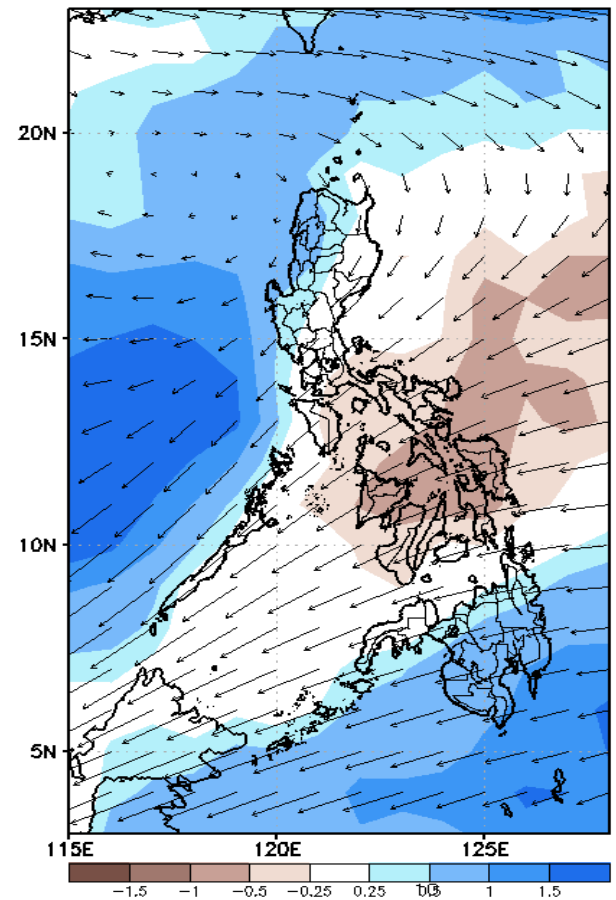
GEFS Week-1 850-hPa Divergence and Wind Anom  
Valid: 20220523 - 20220529



GEFS Week-1 700-hPa Divergence and Wind Anom  
Valid: 20220523 - 20220529



GEFS Week-1 200-hPa Divergence and Wind Anom  
Valid: 20220523 - 20220529

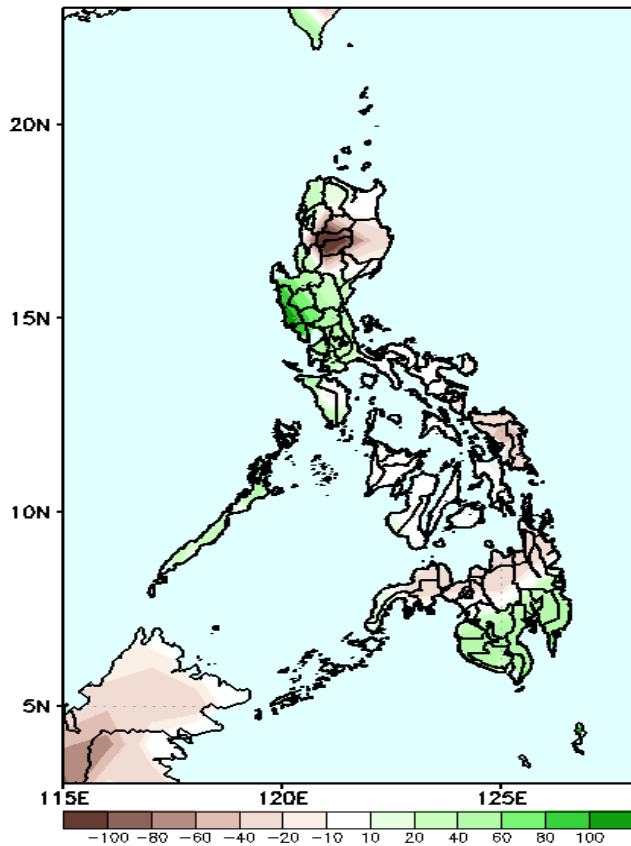


Southwest Monsoon is forecasted to affect most parts of Western Luzon and Western Visayas while Easterlies affecting the Eastern sections of the country during the forecast period

# Precipitation Anomaly and Exceedance Probability > 25/50 mm

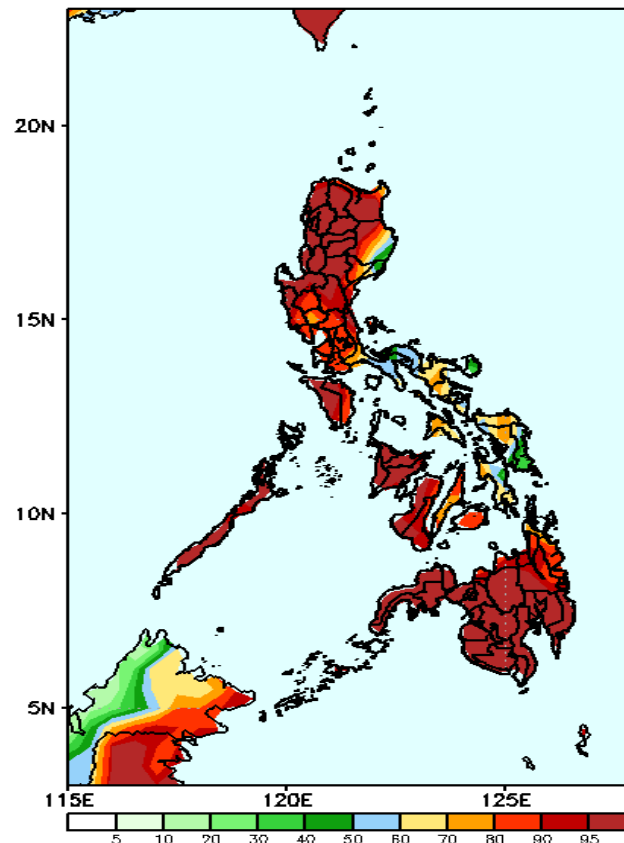
## Week 1: May 23-29, 2022

GEFS Week-1 Precip Anomaly  
Valid: 20220523 - 20220529



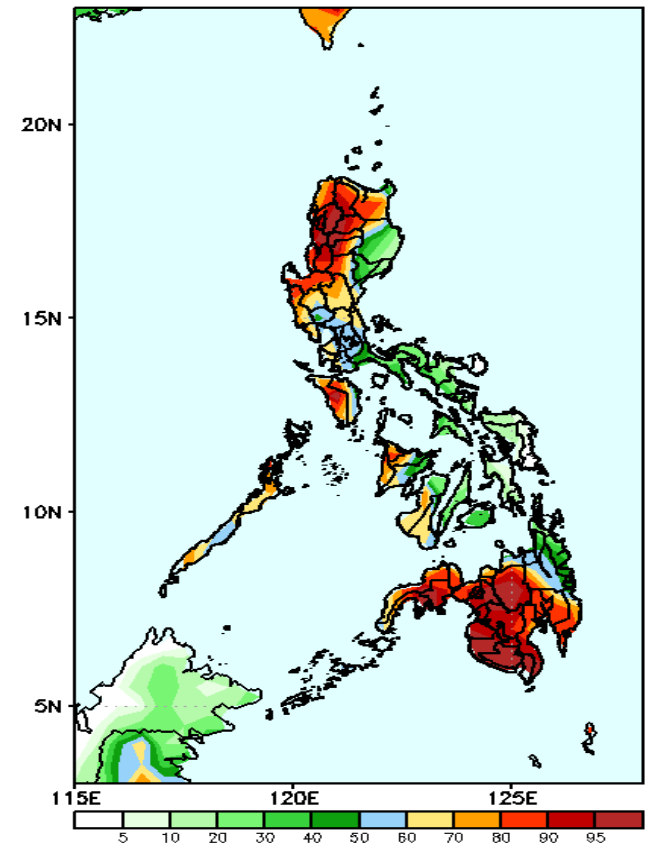
Increase of rainfall of 40-100mm in Ilocos Norte, Cagayan, La Union, Pangasinan and most parts of Central Luzon and southern Mindanao while rainfall deficit of more than 100mm in CAR and 20-80mm in Samar Provinces and Northern Mindanao during the forecast period .

GEFS Week-1 Exceedance Prob. > 25mm  
Valid: 20220523 - 20220529



High probability of rainfall to exceed 25mm in most parts of the country during the forecast period.

GEFS Week-1 Exceedance Prob. > 50mm  
Valid: 20220523 - 20220529

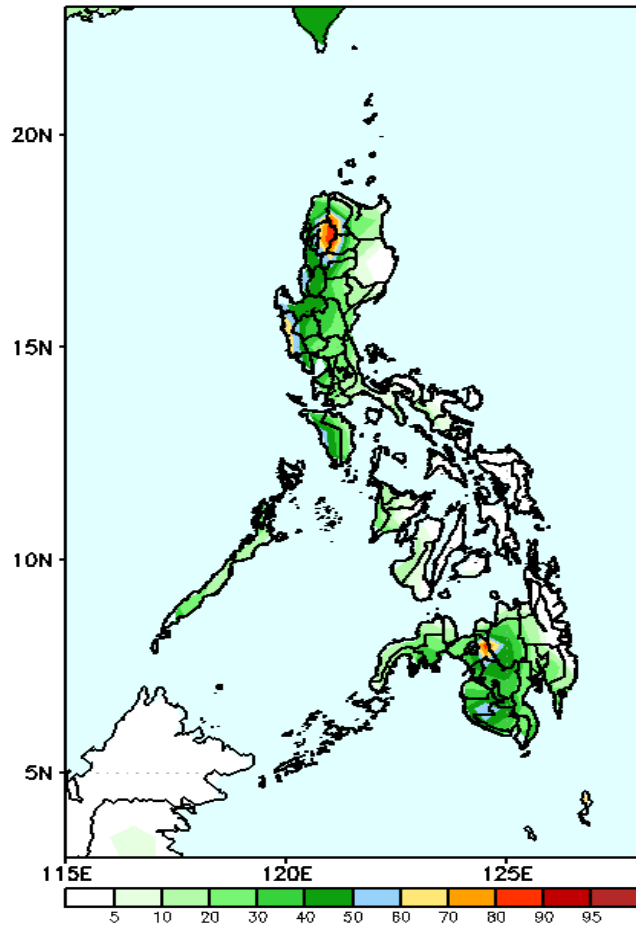


High probability of rainfall to exceed 50mm in most parts of Luzon (except Isabela, Quirino & Bicol Region), western Visayas and most parts of Mindanao (except CARAGA) while less likely for the rest of the country during the forecast period.

# Exceedance Probability > 100/150/200 mm

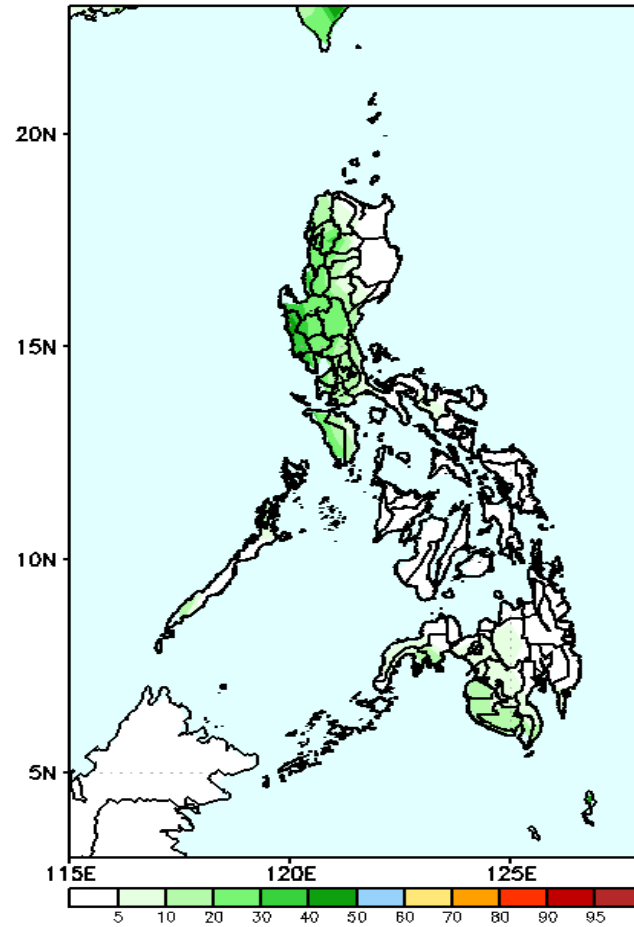
## Week 1: May 23-29, 2022

GEFS Week-1 Exceedance Prob. > 100mm  
Valid: 20220523 - 20220529



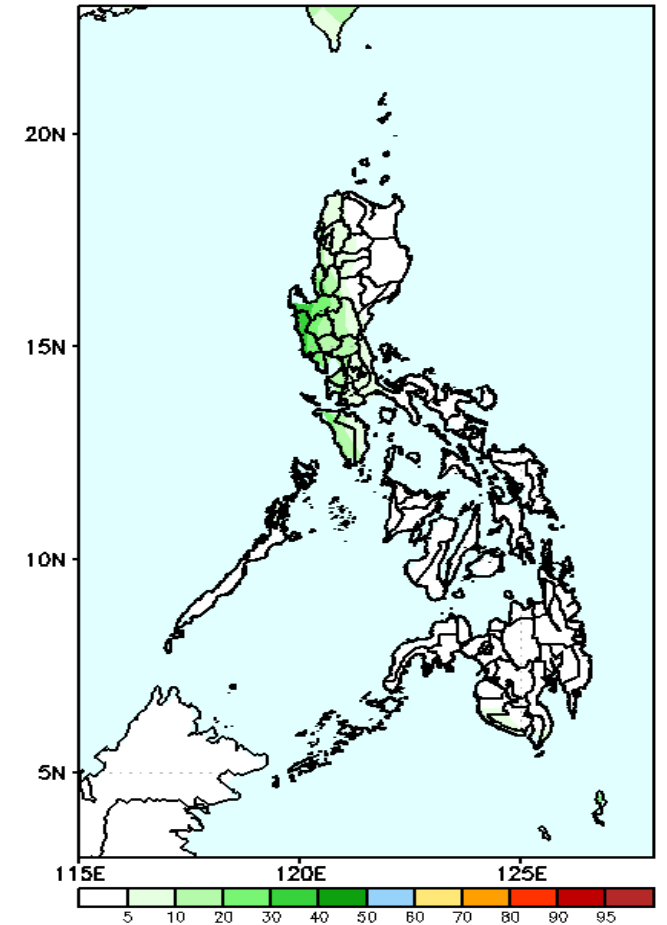
Low probability of rainfall to exceed 100mm in most parts of the country except Abra and Lanao del Sur where there is 80-95% chance during the forecast period.

GEFS Week-1 Exceedance Prob. > 150mm  
Valid: 20220523 - 20220529



Low probability of rainfall to exceed 150mm in most parts of the country during the forecast period.

GEFS Week-1 Exceedance Prob. > 200mm  
Valid: 20220523 - 20220529



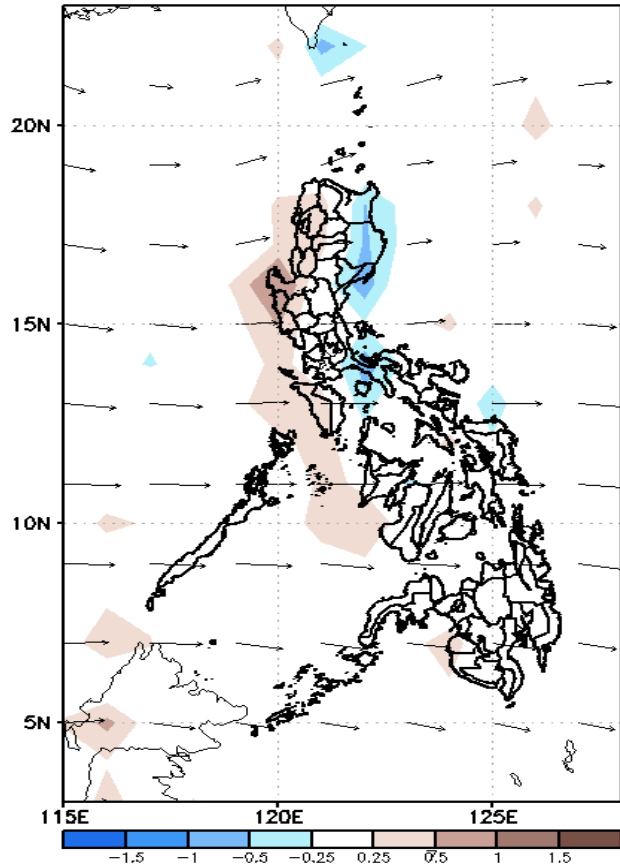
Low probability of rainfall to exceed 200mm in most parts of the country during the forecast period.



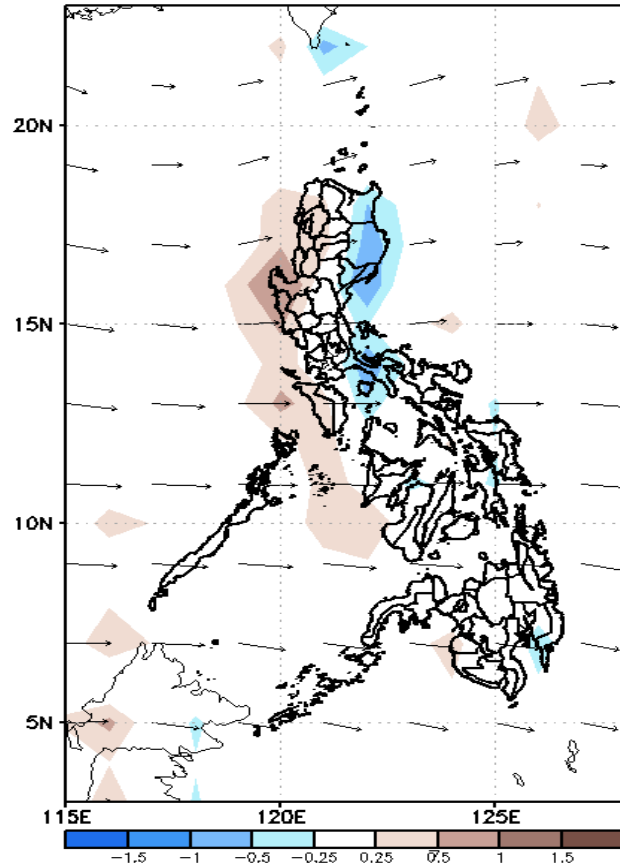
# GEFS Week-2 Forecasts: Wind Anomaly Forecast

Week 2: May 30- Jun 05, 2022

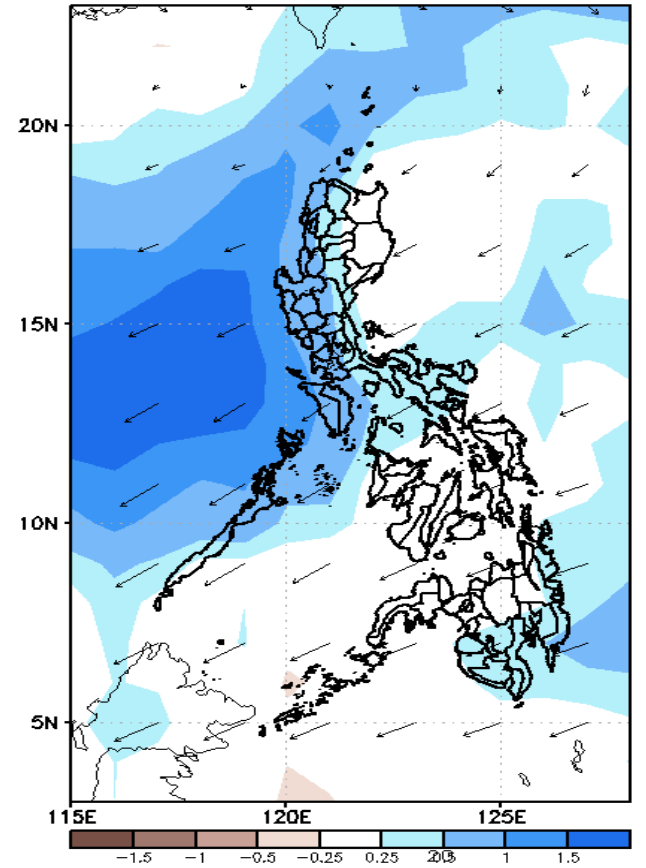
GEFS Week-2 850-hPa Divergence and Wind Anom  
Valid: 20220530 - 20220605



GEFS Week-2 700-hPa Divergence and Wind Anom  
Valid: 20220530 - 20220605



GEFS week-2 200-hPa Divergence and Wind Anom  
Valid: 20220530 - 20220605

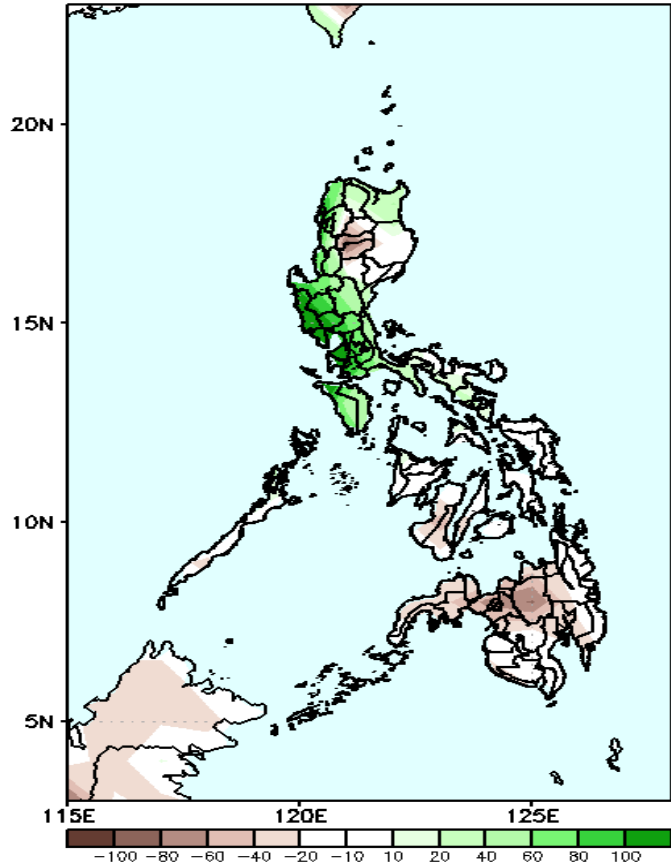


Southwest Monsoon is forecasted to affect the western section of the country while Easterlies affecting the rest of the country during the forecast period

# Precipitation Anomaly and Exceedance Probability > 25/50 mm

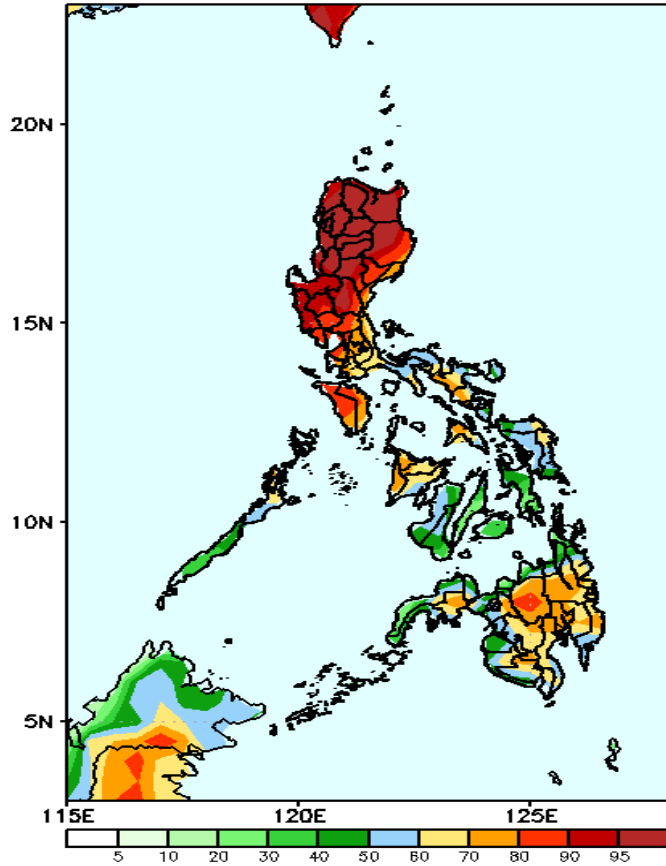
## Week 2: May 30- Jun 05, 2022

GEFS Week-2 Precip Anomaly  
Valid: 20220530 - 20220605



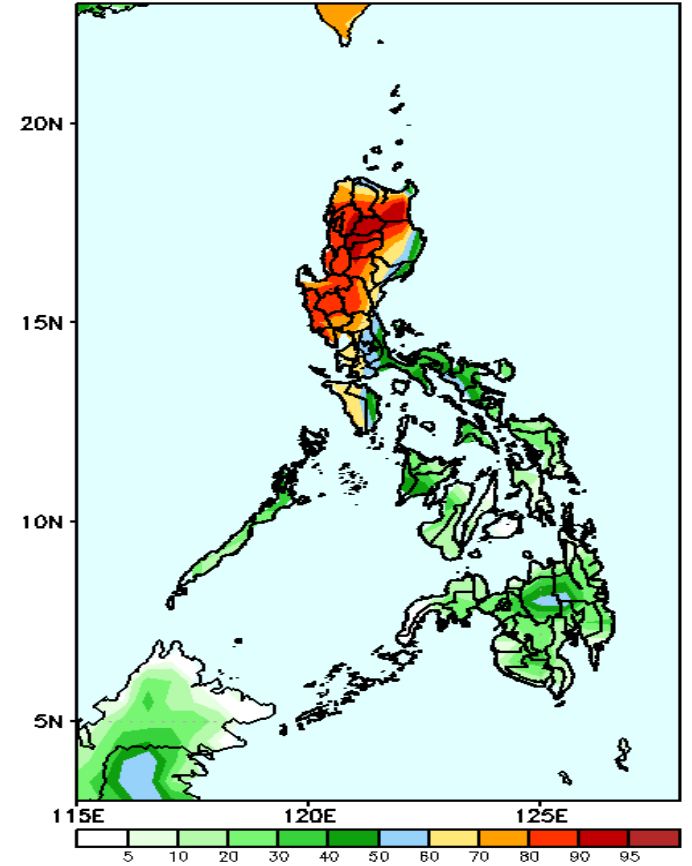
Increase of rainfall of more than 40-100mm in most parts of Luzon (except Isabela) while rainfall deficit of 40-80mm in Cordillera Region and most parts of Visayas and Mindanao during the forecast period.

GEFS Week-2 Exceedance Prob. > 25mm  
Valid: 20220530 - 20220605



High probability of rainfall to exceed 25mm in most parts the country except in Central Visayas during the forecast period.

GEFS Week-2 Exceedance Prob. > 50mm  
Valid: 20220530 - 20220605



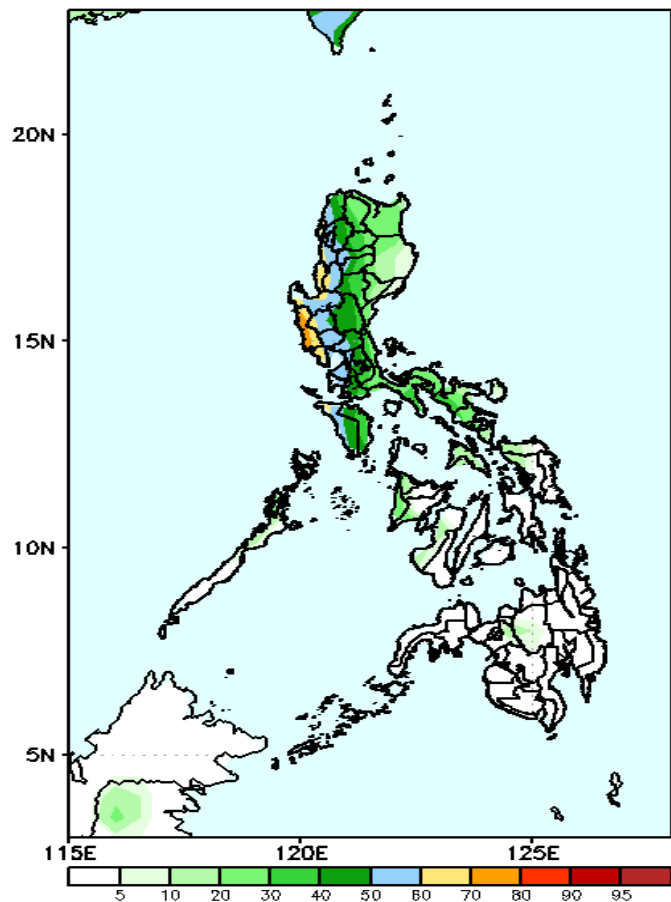
High probability of rainfall to exceed 50mm in most parts of Luzon while less likely in Bicol Region, in Visayas and Mindanao during the forecast period



# Exceedance Probability > 100/150/200 mm

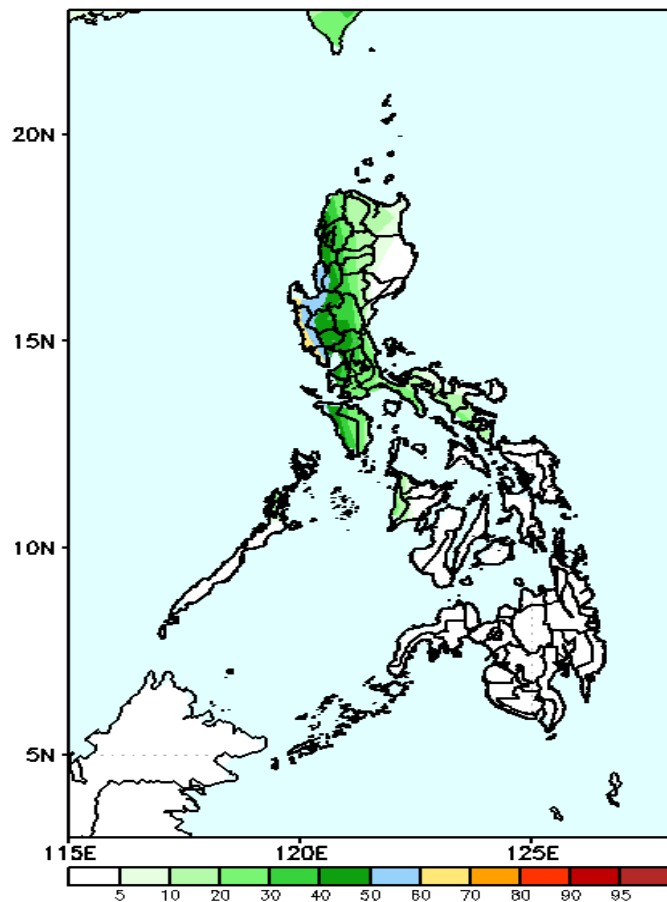
## Week 2: May 30- Jun 05, 2022

GEFS Week-2 Exceedance Prob. > 100mm  
Valid: 20220530 - 20220605



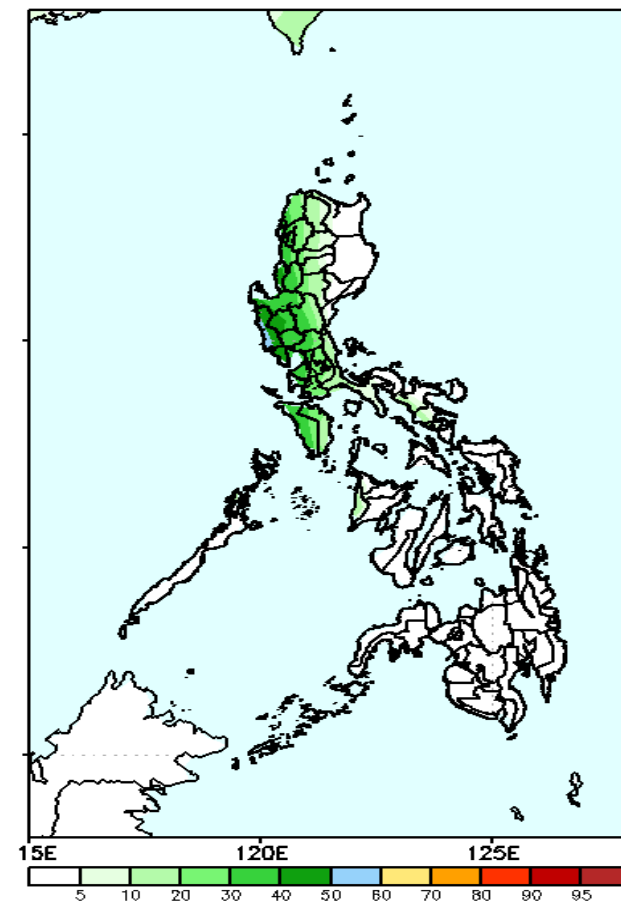
High probability of rainfall to exceed 100mm in most parts of the country except in western Luzon where there is 60-85% chance during the forecast period.

GEFS Week-2 Exceedance Prob. > 150mm  
Valid: 20220530 - 20220605



Low probability of rainfall to exceed 150mm in most parts of the country except in Pangasinan and Zambales where there is 60-75% chance during the forecast period.

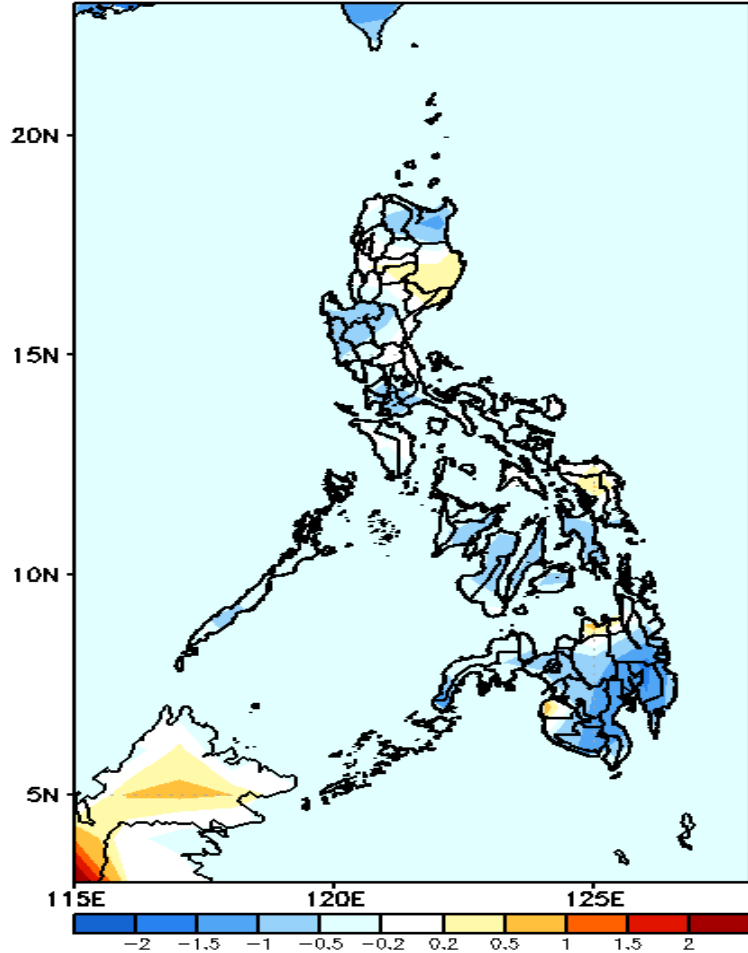
GEFS Week-2 Exceedance Prob. > 200mm  
Valid: 20220530 - 20220605



Low probability of rainfall to exceed 200mm in most parts of the country except in Zambales where there is 60-75% chance during the forecast period.

# GEFS Week-1 & 2 Forecasts: T2m Anomaly

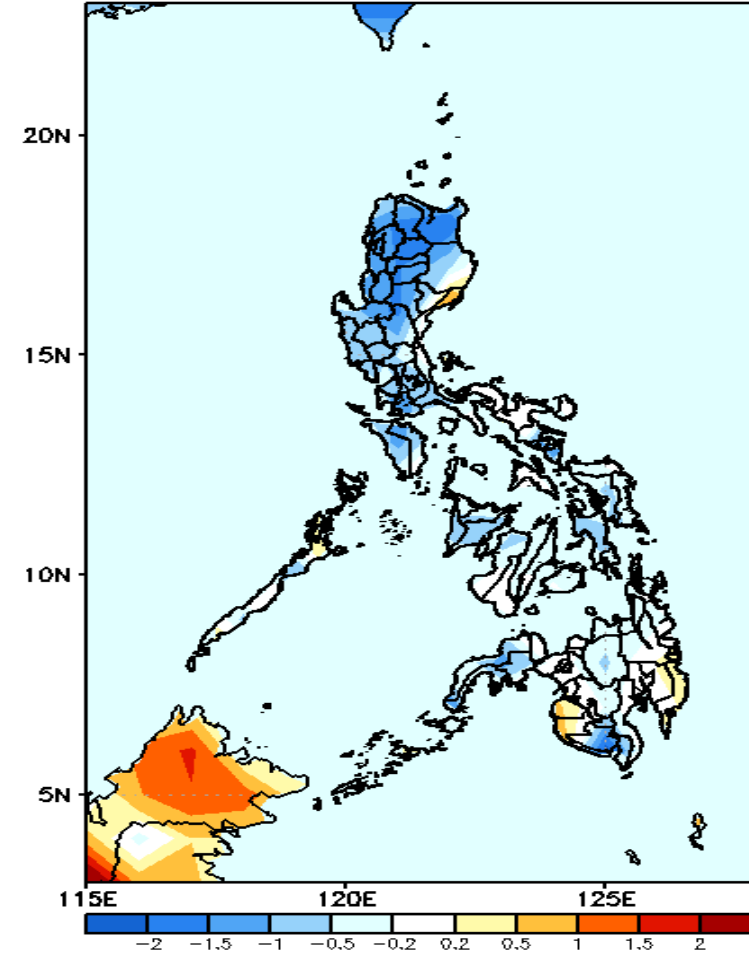
GEFS Week-1 T2m Anomaly  
Valid: 20220523 - 20220529



## 2m Temperature Week 1: May 23-29, 2022

Slightly cooler than average surface air temperatures will likely experience in most parts of Luzon, Visayas and northern Mindanao (except in Isabela, Ifugao, Baler, Samar, Misamis Oriental and Maguindanao where slightly warmer temperature is expected) and cooler than average in Southern Mindanao during the forecast period.

GEFS Week-2 T2m Anomaly  
Valid: 20220530 - 20220605



## 2m Temperature Week 2: May 30- Jun 05, 2022

Cooler than average surface air temperature will likely experience in most parts of Luzon and South Cotabato while average to slightly cooler temperature in Visayas and Mindanao (except Davao Oriental, Maguindanao and Sultan Kudarat) during the forecast period.